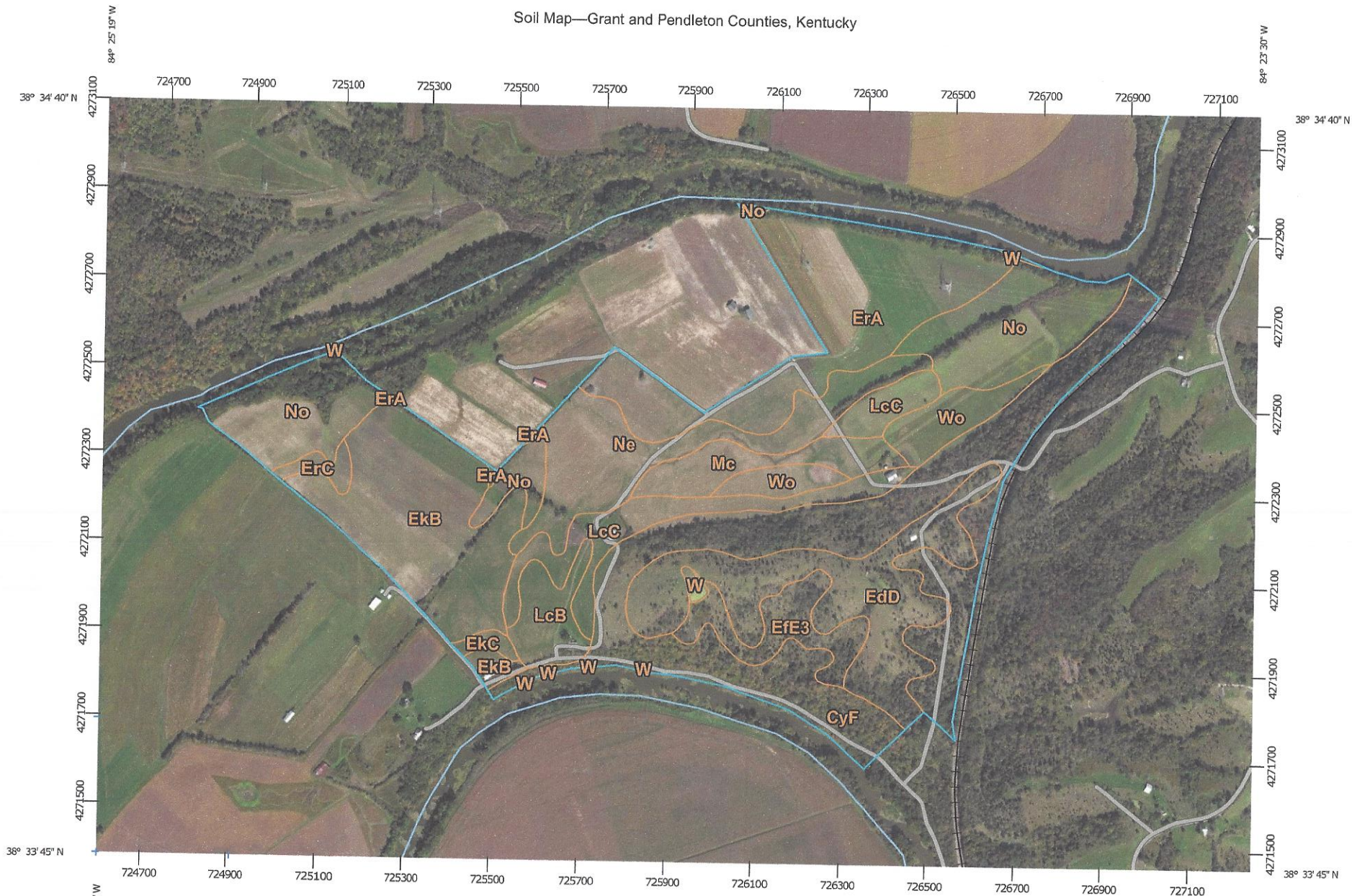


Soil Map—Grant and Pendleton Counties, Kentucky



Map Scale: 1:12,100 if printed on A landscape (11" x 8.5") sheet.


0 150 300 600 900 Meters

0 500 1000 2000 3000 Feet

Map projection: Web Mercator Corner coordinates: WGS84 Edge ticks: UTM Zone 16N WGS84

MAP LEGEND

Area of Interest (AOI)

 Area of Interest (AOI)

Soils

 Soil Map Unit Polygons

 Soil Map Unit Lines

 Soil Map Unit Points

Special Point Features

 Blowout

 Borrow Pit

 Clay Spot

 Closed Depression

 Gravel Pit

 Gravelly Spot

 Landfill

 Lava Flow

 Marsh or swamp

 Mine or Quarry

 Miscellaneous Water

 Perennial Water

 Rock Outcrop

 Saline Spot

 Sandy Spot


 Severely Eroded Spot


 Sinkhole


 Slide or Slip

 Sodic Spot

 Spoil Area

 Stony Spot


 Very Stony Spot

 Wet Spot

 Other

 Special Line Features

Water Features

 Streams and Canals

Transportation

 Rails


 Interstate Highways

 US Routes

 Major Roads

 Local Roads

Background

 Aerial Photography

MAP INFORMATION

The soil surveys that comprise your AOI were mapped at 1:15,800.

Please rely on the bar scale on each map sheet for map measurements.

Source of Map: Natural Resources Conservation Service
 Web Soil Survey URL: <http://websoilsurvey.nrcs.usda.gov>
 Coordinate System: Web Mercator (EPSG:3857)

Maps from the Web Soil Survey are based on the Web Mercator projection, which preserves direction and shape but distorts distance and area. A projection that preserves area, such as the Albers equal-area conic projection, should be used if more accurate calculations of distance or area are required.

This product is generated from the USDA-NRCS certified data as of the version date(s) listed below.

Soil Survey Area: Grant and Pendleton Counties, Kentucky
 Survey Area Data: Version 14, Sep 15, 2015

Soil map units are labeled (as space allows) for map scales 1:50,000 or larger.

Date(s) aerial images were photographed: Oct 4, 2011—Feb 20, 2012

The orthophoto or other base map on which the soil lines were compiled and digitized probably differs from the background imagery displayed on these maps. As a result, some minor shifting of map unit boundaries may be evident.

Map Unit Legend

Grant and Pendleton Counties, Kentucky (KY619)			
Map Unit Symbol	Map Unit Name	Acres in AOI	Percent of AOI
CyF	Cynthiana-Rock outcrop complex, 20 to 50 percent slopes	66.4	20.9%
EdD	Eden silty clay loam, 6 to 20 percent slopes	35.8	11.2%
EfE3	Eden flaggy silty clay, 20 to 30 percent slopes, severely eroded	10.8	3.4%
EkB	Elk silt loam, 2 to 6 percent slopes	39.8	12.5%
EkC	Elk silt loam, 6 to 12 percent slopes	1.4	0.4%
ErA	Elk silt loam, 0 to 2 percent slopes, rarely flooded	44.6	14.0%
ErC	Elk silt loam, 6 to 12 percent slopes, rarely flooded	2.2	0.7%
LcB	Licking silt loam, 2 to 6 percent slopes	8.0	2.5%
LcC	Licking silt loam, 6 to 12 percent slopes	19.6	6.2%
Mc	McGary silt loam	10.4	3.3%
Ne	Newark silt loam, 0 to 2 percent slopes, frequently flooded	25.4	8.0%
No	Nolin silt loam, 0 to 2 percent slopes, occasionally flooded	41.8	13.1%
W	Water	0.9	0.3%
Wo	Woolper silty clay loam	11.4	3.6%
Totals for Area of Interest		318.3	100.0%